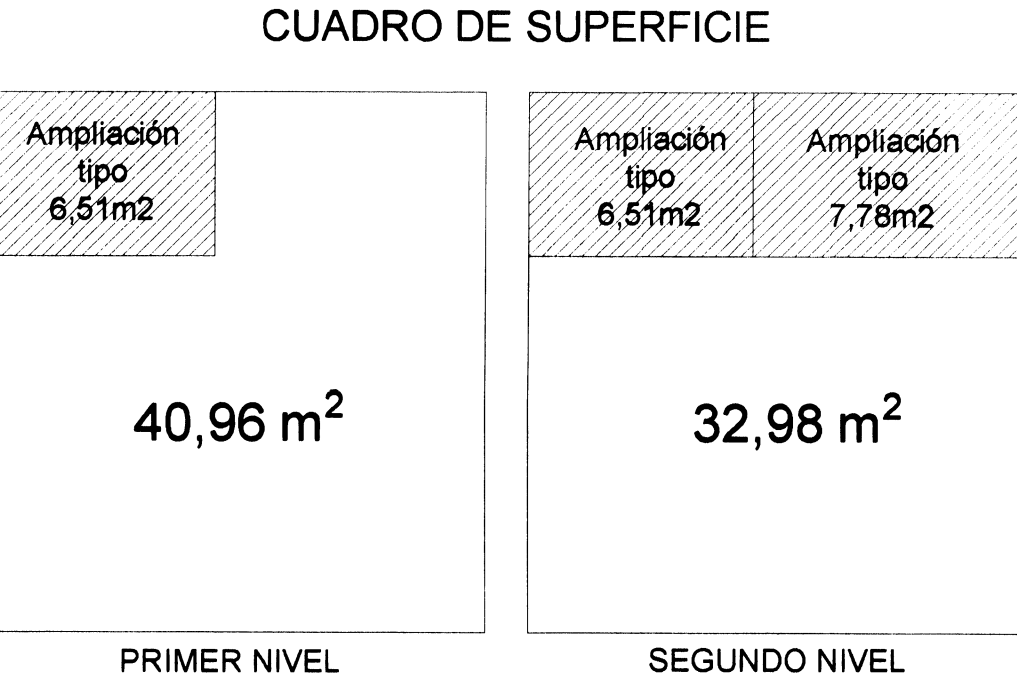
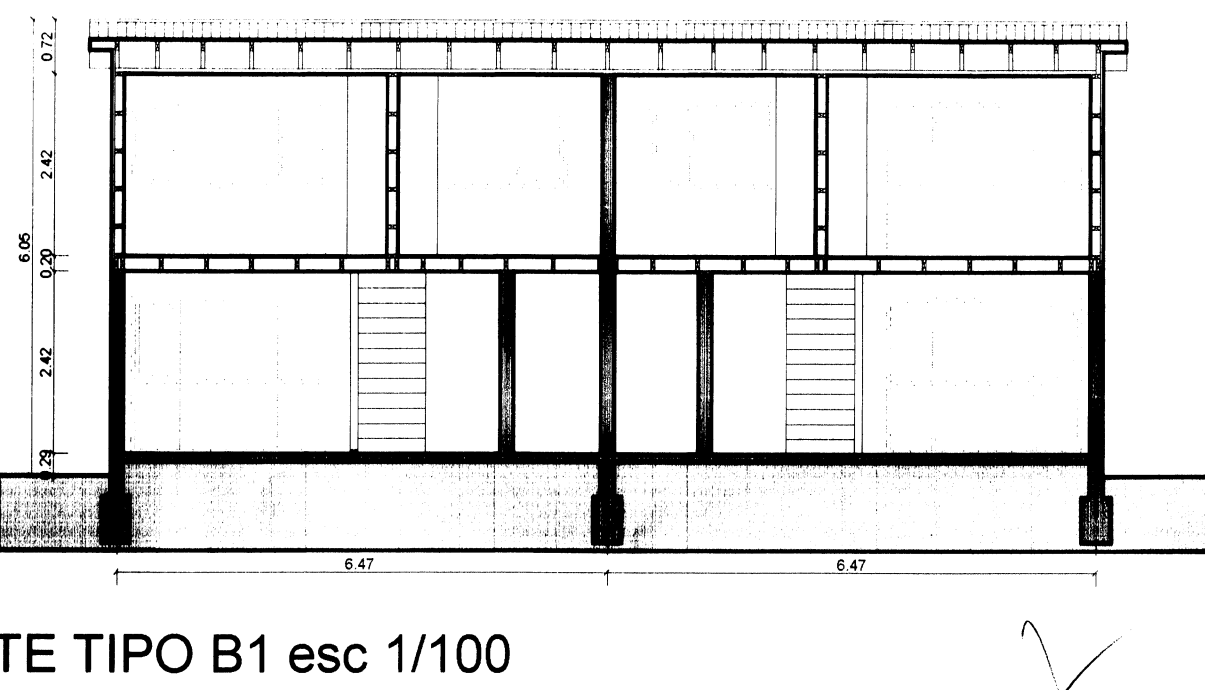
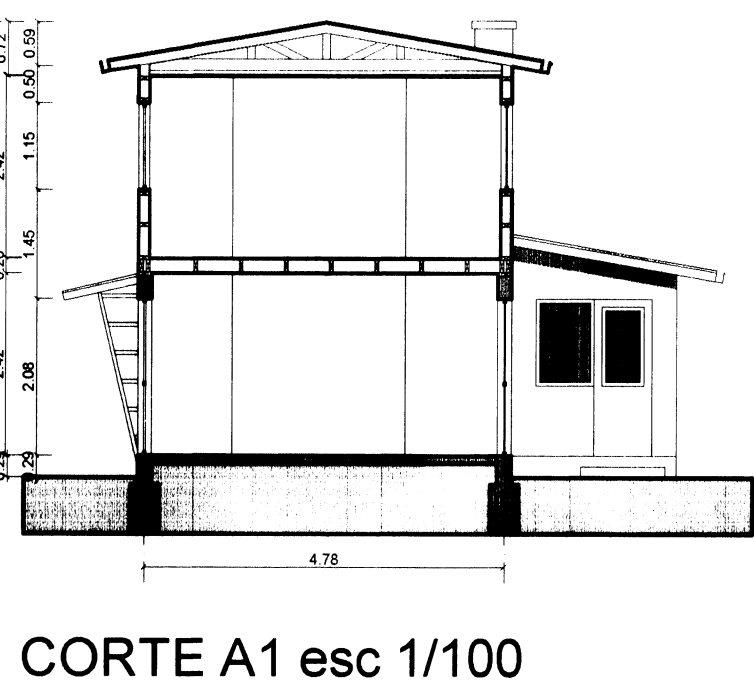
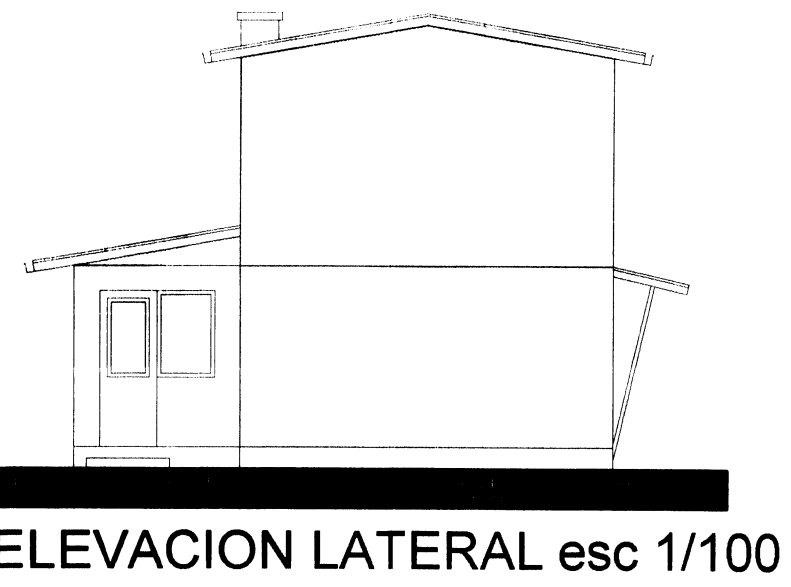
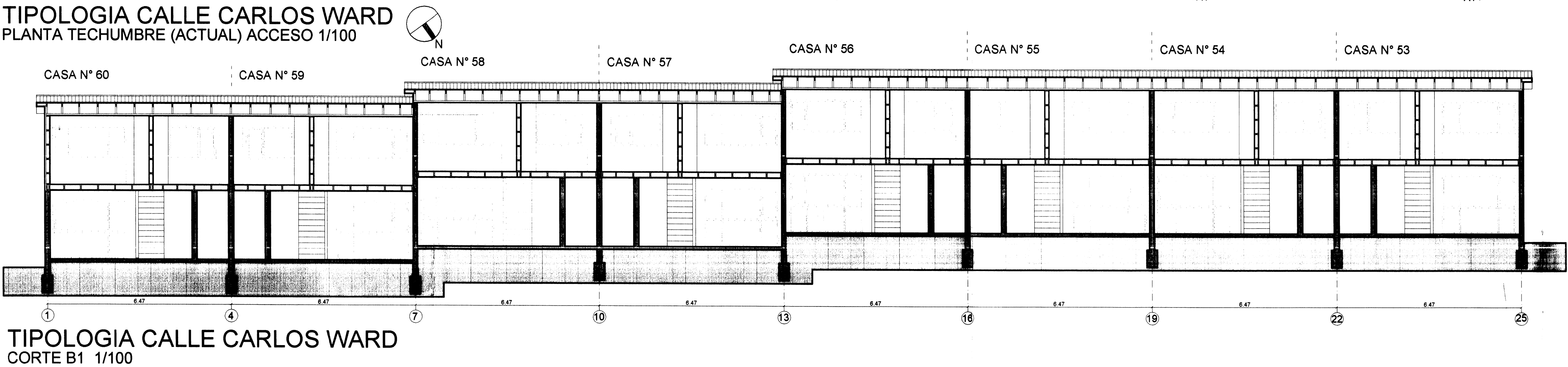
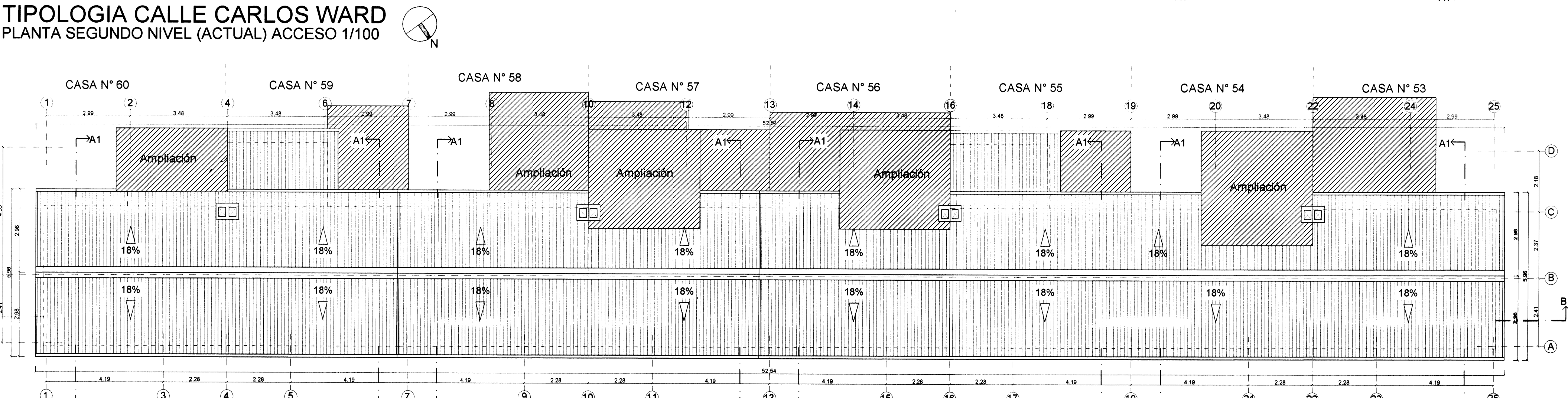
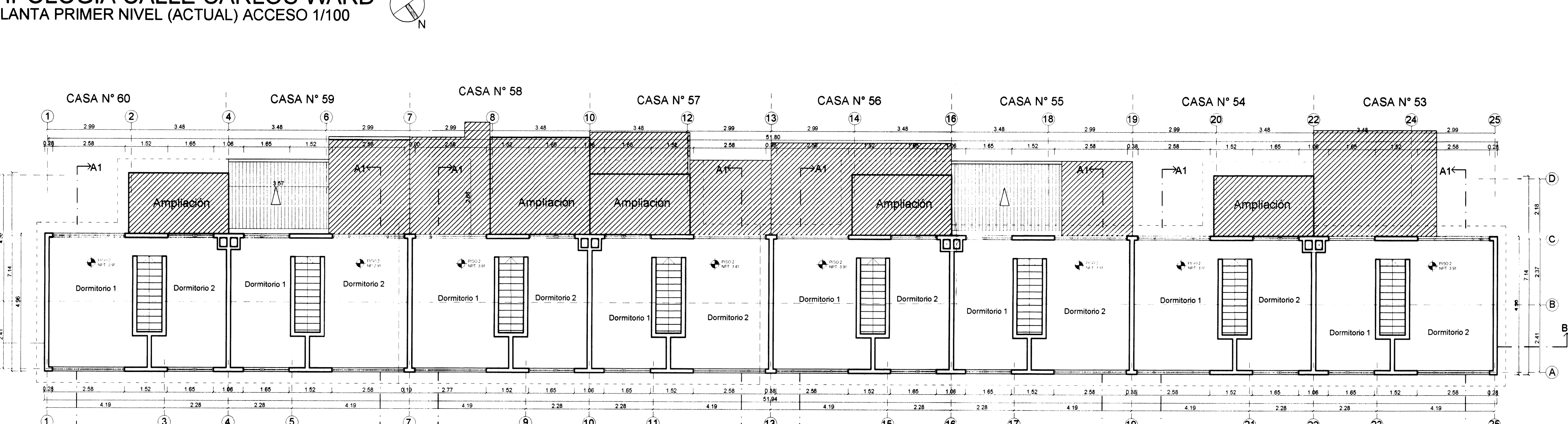
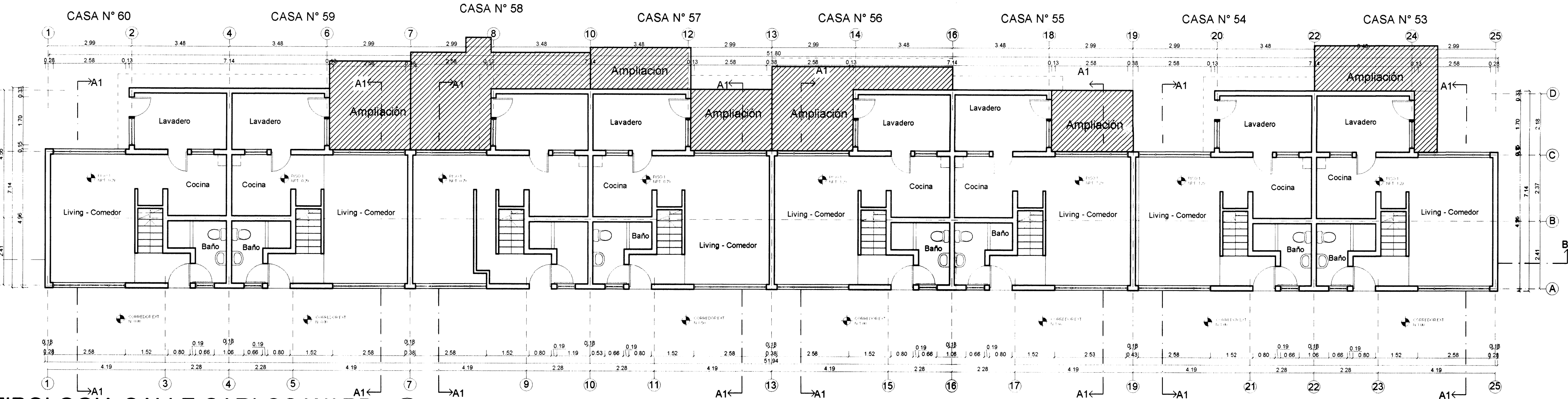
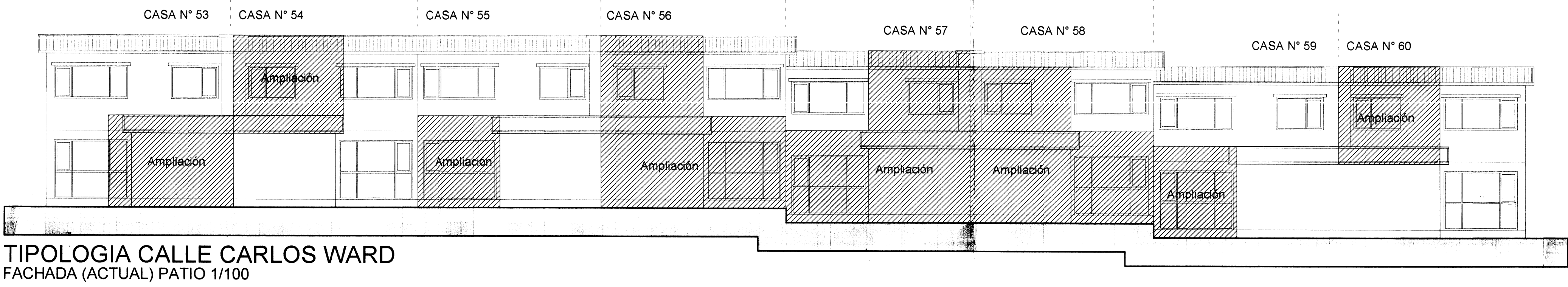
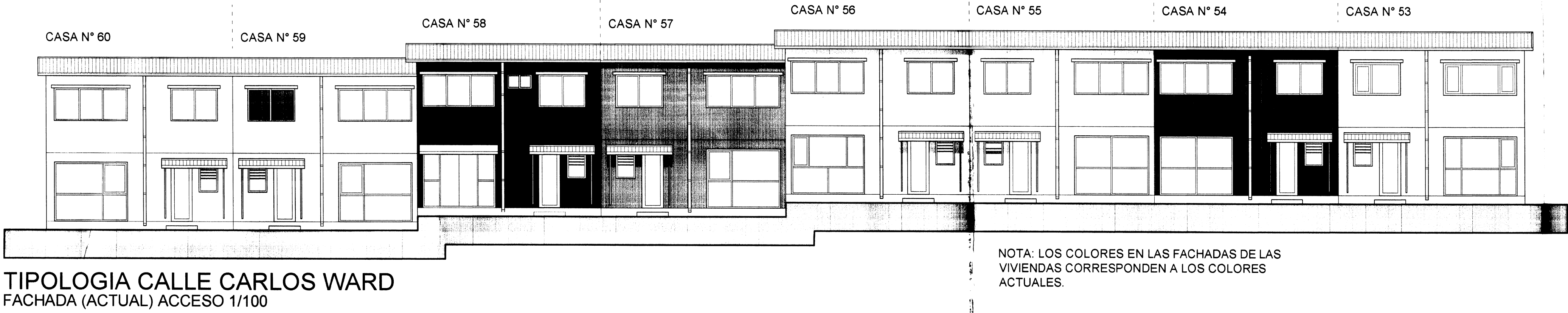


POBLACION VIPLA, LIRQUEN. PENCO

TIPOLOGIA AZUL - EXISTENTE - CALLE CARLOS WARD

VIVIENDAS 53 - 54 - 55 - 56 - 57 - 58 - 59 - 60



CUADRO DE SUPERFICIES			
Nº	1ER NIVEL	2DO NIVEL	TOTAL
53	42.74 M2	32.98 M2	75.72 M2
54	40.96 M2	40.75 M2	81.72 M2
55	47.46 M2	32.98 M2	80.44 M2
56	47.46 M2	40.75 M2	88.23 M2
57	47.46 M2	40.75 M2	88.23 M2
58	47.46 M2	40.75 M2	88.23 M2
59	47.46 M2	32.98 M2	80.44 M2
60	40.96 M2	40.75 M2	81.72 M2

Programa Protección del Patrimonio Familiar de Reconstrucción Patrimonial.

**POBLACION VIPLA, LIRQUEN**  
**CALLE CARLOS WARD - TIPOLOGIA AZUL - SITUACION ACTUAL**

Representante Legal Comite  
Mauricio Pardo Hidalgo  
RUT: 6.250.381-5

Firma  
*Mauricio Pardo Hidalgo*

EGIS  
I. Municipalidad de Penco

RUT: 66.150.500-6  
Piso Legal: Victor Hugo Figueroa Rebolledo  
Constructora Los Lleques  
Pedro Aguirre Cerdá 317, Depto 203  
15069670000  
Rut. Legal: Mauricio Matus Hemostilla

SEAL OF THE MUNICIPALITY OF PENCO  
SEAL OF THE CONSTRUCTION COMPANY LOS LLEQUES

Los Lleques  
constructora

Fecha: 05-2013